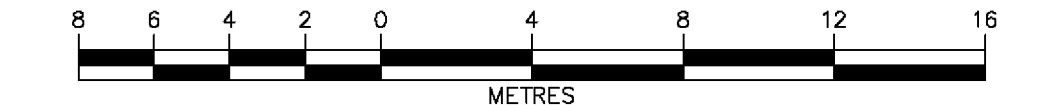


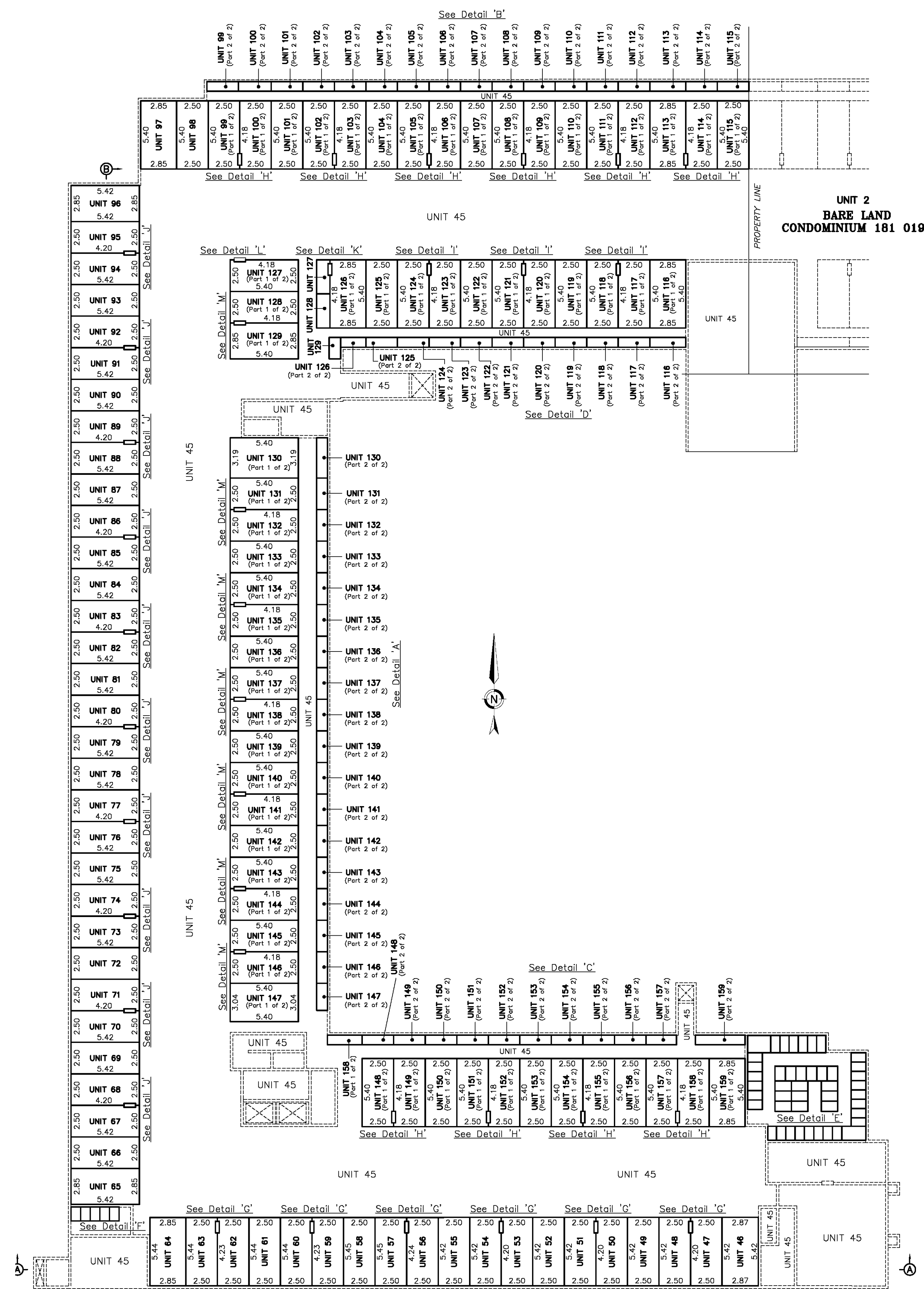
CALGARY, ALBERTA
PLAN SHOWING SURVEY OF
CONDOMINIUM
OF RE-DIVISION OF
UNIT 1 AND 5585 UNDIVIDED
ONE TEN THOUSANDTH SHARES IN
THE COMMON PROPERTY
BARE LAND CONDOMINIUM PLAN 181 0190
WITHIN THE
N.E.1/4 Sec.26 Twp.25 Rge.29 W.4th M.

BY: JODY E. CLARKE, A.L.S., 2018

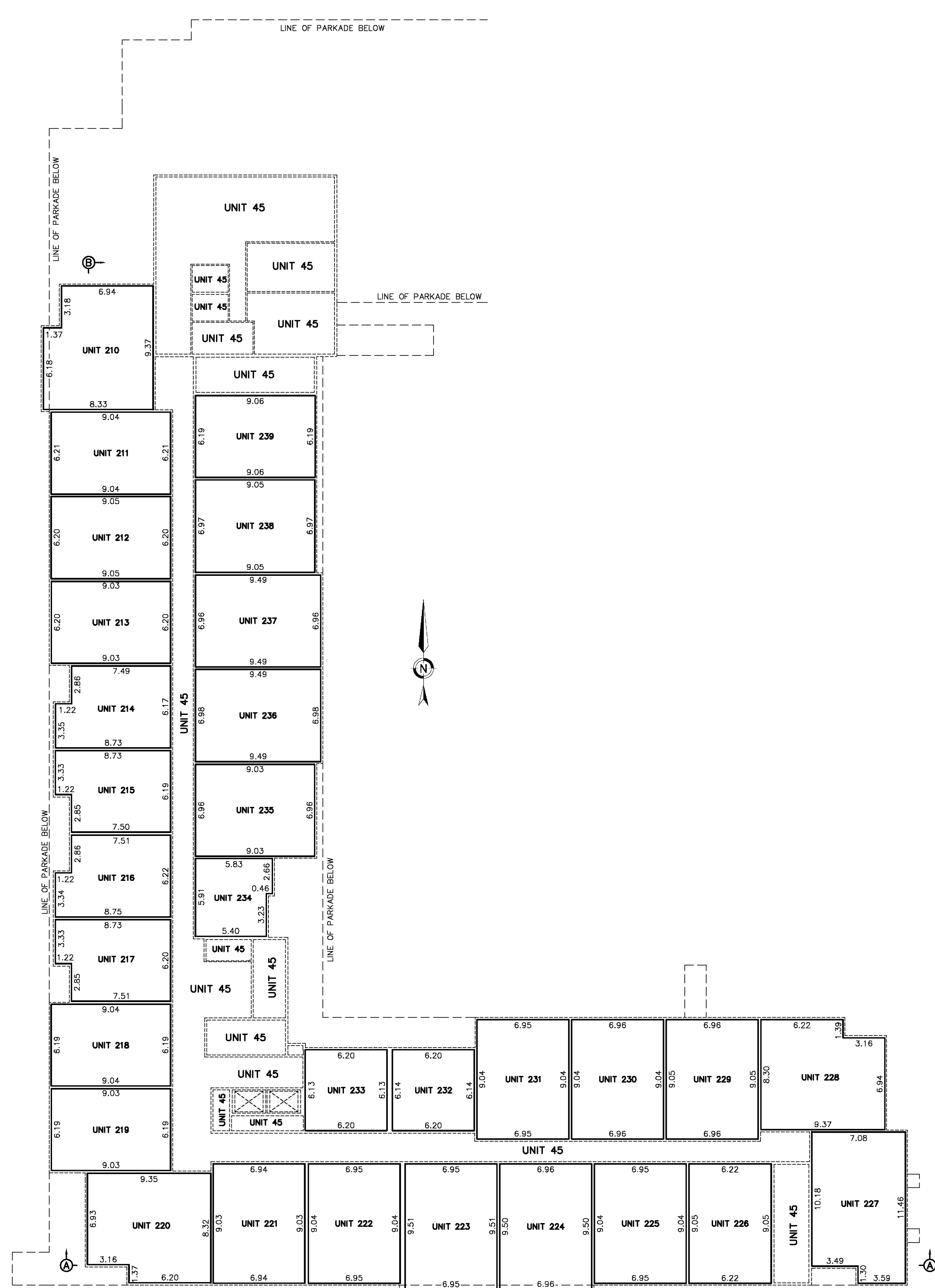
SCALE = 1 : 200



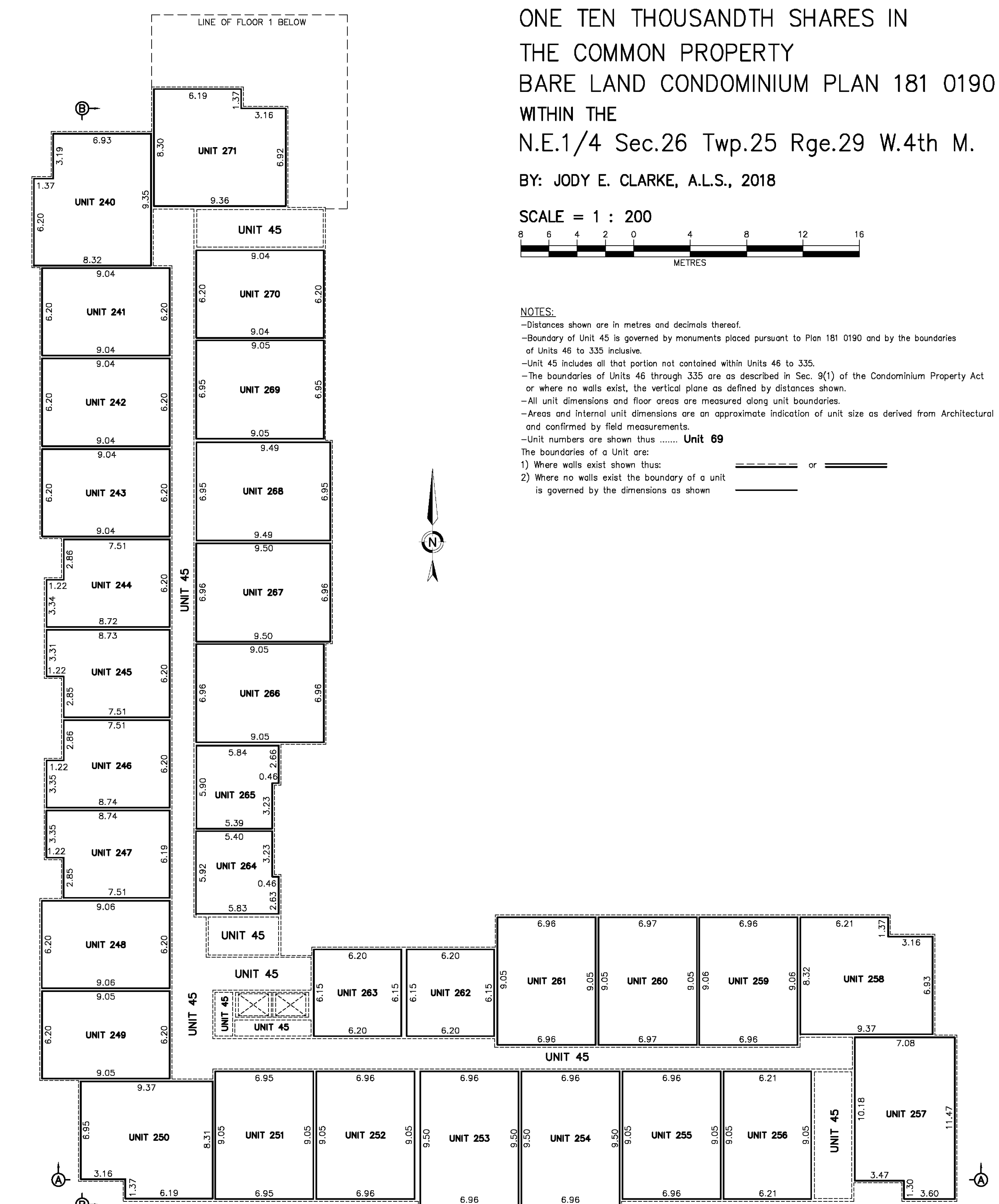
- NOTES:**
- Distances shown are in metres and decimals thereof.
 - Boundary of Unit 45 is governed by monuments placed pursuant to Plan 181 0190 and by the boundaries of Units 46 to 335 inclusive.
 - Unit 45 includes all that portion not contained within Units 46 to 335.
 - The boundaries of Units 46 through 335 are as described in Sec. 9(1) of the Condominium Property Act or where no walls exist, the vertical plane as defined by distances shown.
 - All unit dimensions and floor areas are measured along unit boundaries.
 - Areas and internal unit dimensions are an approximate indication of unit size as derived from Architectural plans, and confirmed by field measurements.
 - Unit numbers are shown thus: **Unit 69**
 - The boundaries of a unit are:
 - 1) Where walls exist shown thus:
 - 2) Where no walls exist the boundary of a unit is governed by the dimensions as shown:



LOWER FLOOR
SCALE = 1 : 200



FLOOR 1
SCALE = 1 : 200

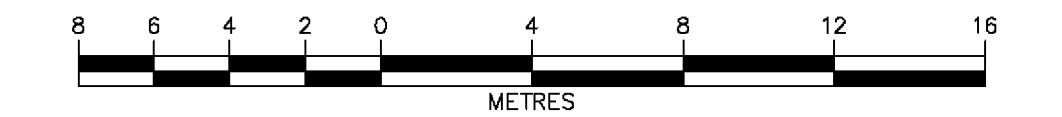


FLOOR 2
SCALE = 1 : 200

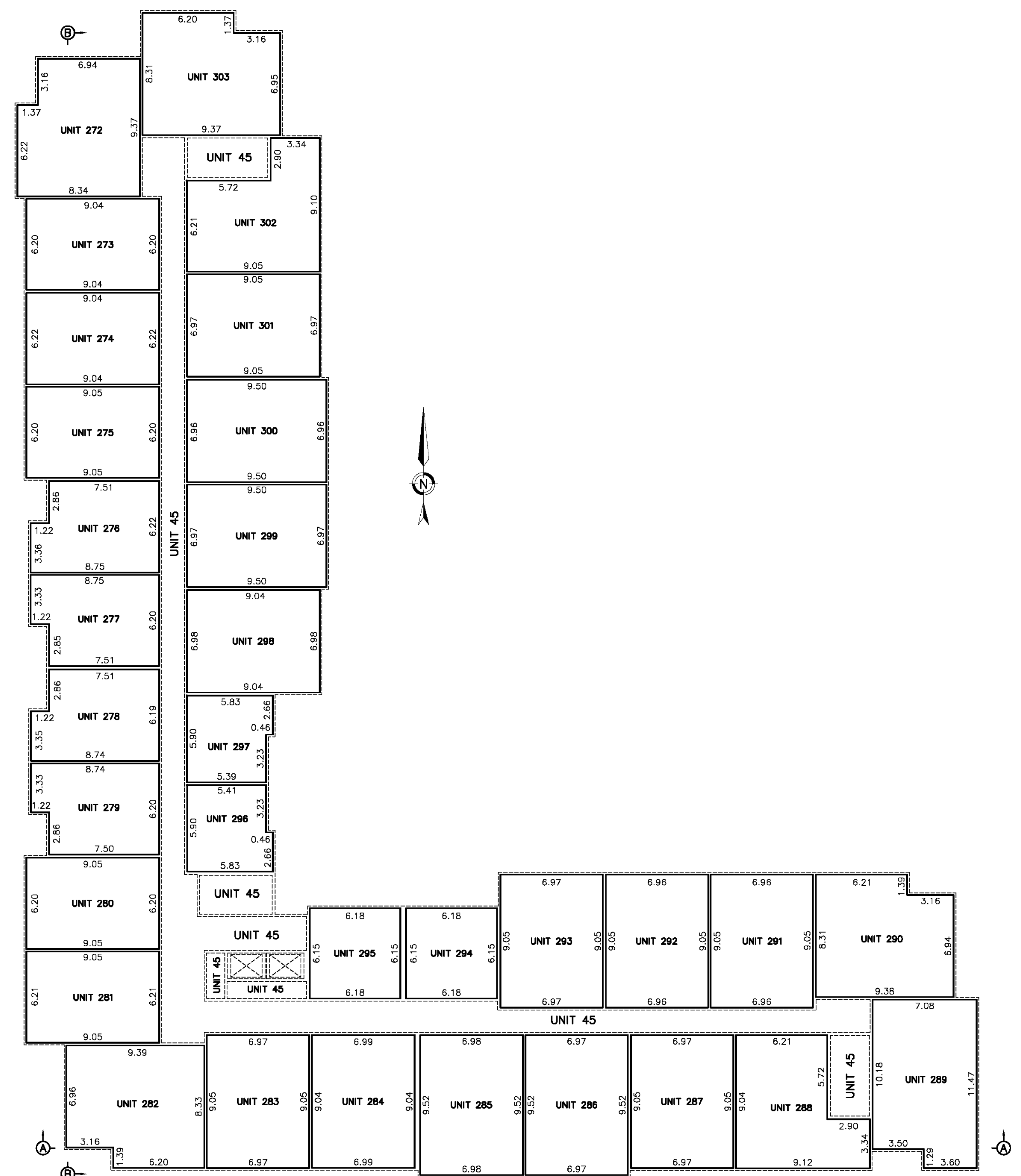
CALGARY, ALBERTA PLAN SHOWING SURVEY OF CONDOMINIUM OF RE-DIVISION OF UNIT 1 AND 5585 UNDIVIDED ONE TEN THOUSANDTH SHARES IN THE COMMON PROPERTY BARE LAND CONDOMINIUM PLAN 181 0190 WITHIN THE N.E.1/4 Sec.26 Twp.25 Rge.29 W.4th M.

BY: JODY E. CLARKE, A.L.S., 2018

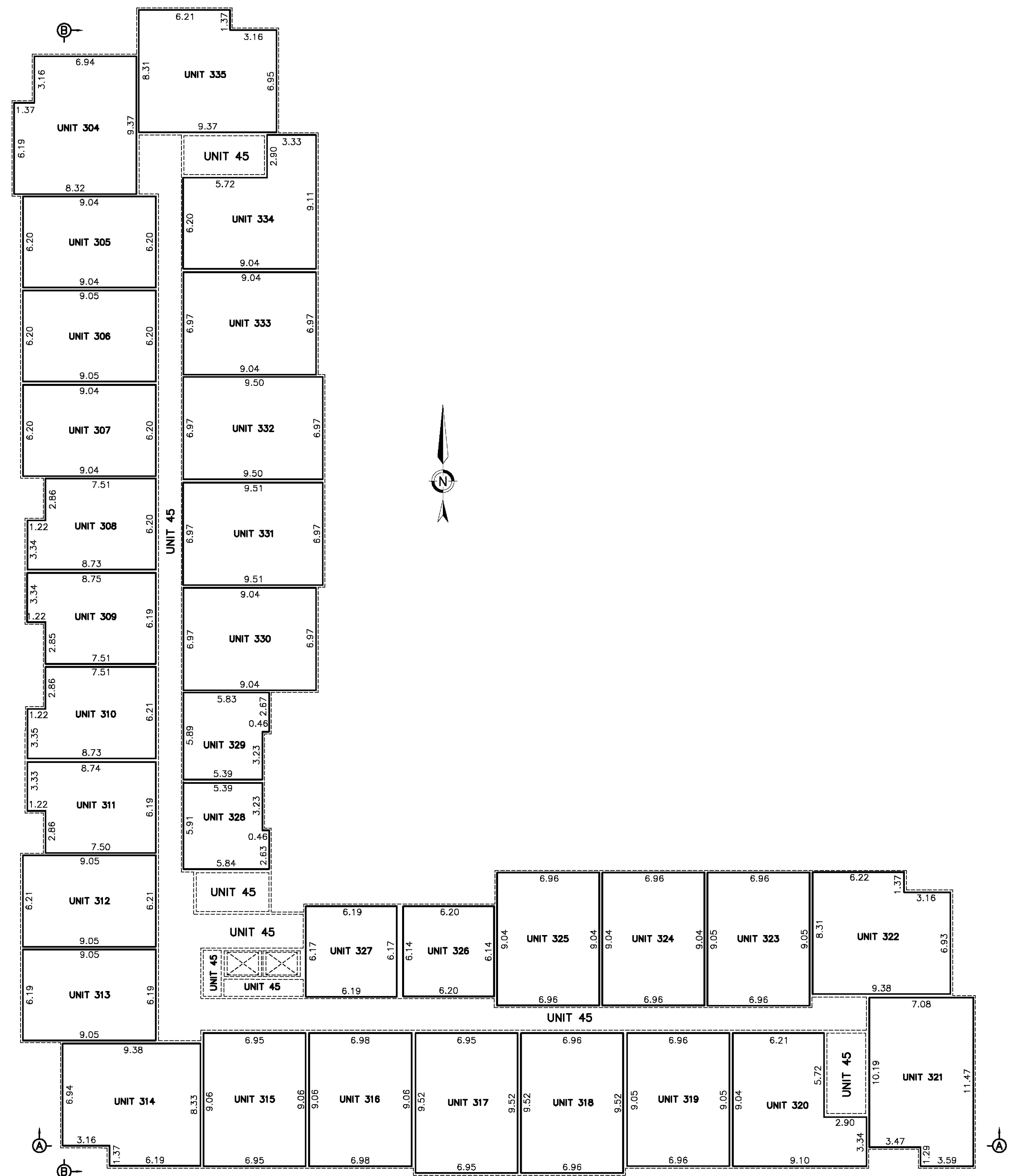
SCALE = 1 : 200



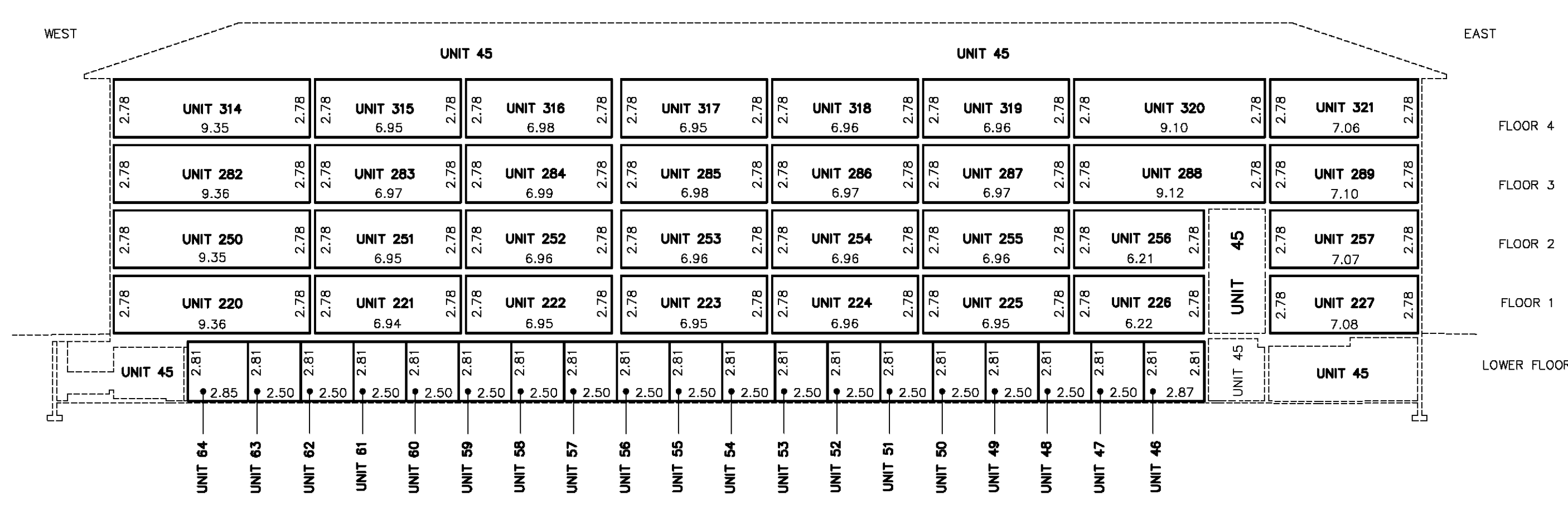
- NOTES: -Distances shown are in metres and decimals thereof. -Boundary of Unit 45 is governed by monuments placed pursuant to Plan 181 0190 and by the boundaries of Units 46 to 335 inclusive. -Unit 45 includes all that portion not contained within Units 46 to 335. -The boundaries of Units 46 through 335 are as described in Sec. 9(1) of the Condominium Property Act or where no walls exist, the vertical plane as defined by distances shown. -All unit dimensions and floor areas are measured along unit boundaries. -Areas and internal unit dimensions are an approximate indication of unit size as derived from Architectural plans, and confirmed by field measurements. -Unit numbers are shown thus: Unit 46 The boundaries of a unit are: 1) Where walls exist shown thus: or 2) Where no walls exist the boundary of a unit is governed by the dimensions as shown



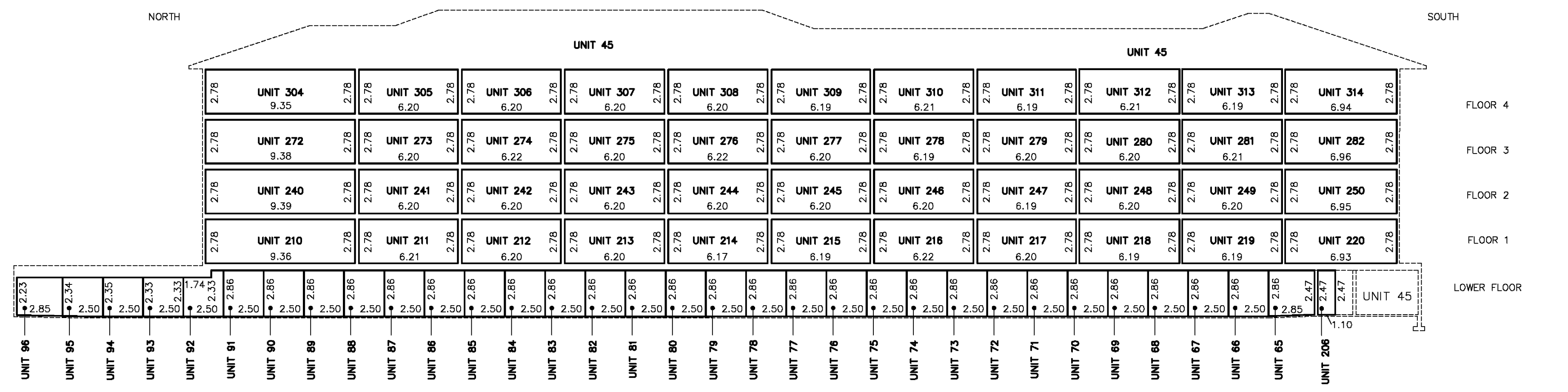
FLOOR 3 SCALE = 1 : 200



FLOOR 4 SCALE = 1 : 200



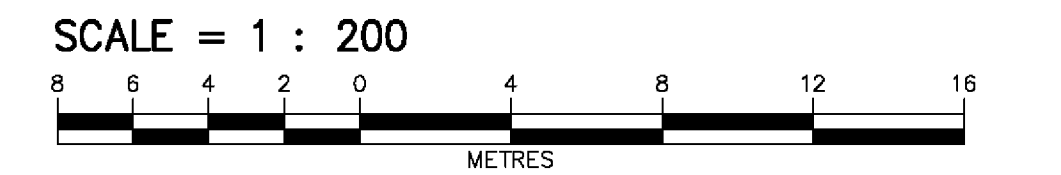
Section A-A SCALE = 1 : 200



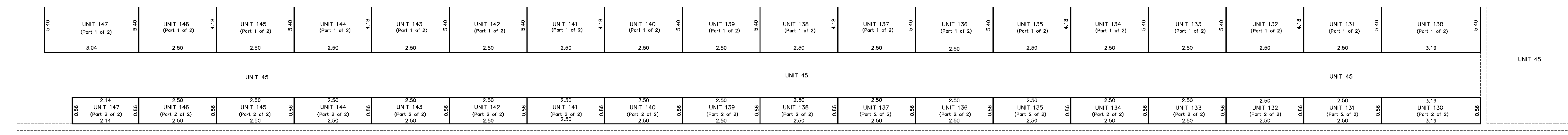
Section B-B SCALE = 1 : 200

CALGARY, ALBERTA
 PLAN SHOWING SURVEY OF
CONDOMINIUM
 OF RE-DIVISION OF
 UNIT 1 AND 5585 UNDIVIDED
 ONE TEN THOUSANDTH SHARES IN
 THE COMMON PROPERTY
 BARE LAND CONDOMINIUM PLAN 181 0190
 WITHIN THE
 N.E.1/4 Sec.26 Twp.25 Rge.29 W.4th M.

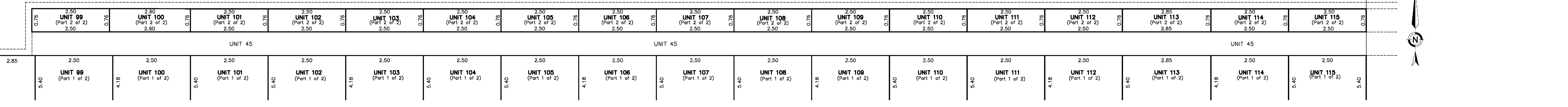
BY: JODY E. CLARKE, A.L.S., 2018



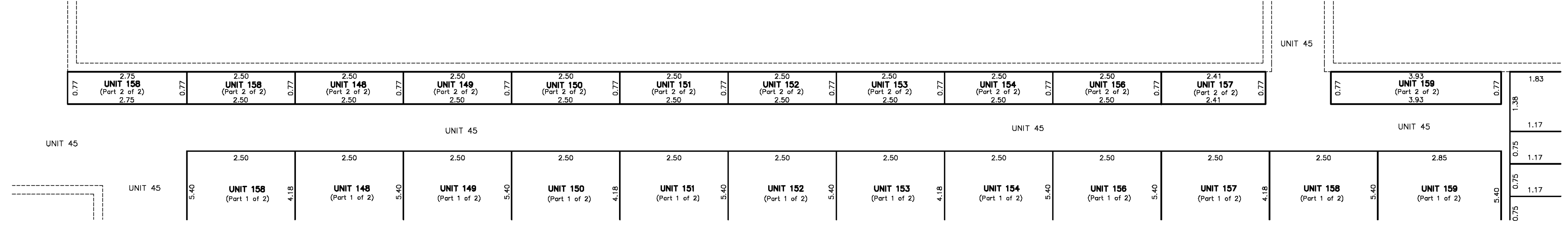
- NOTES:**
- Distances shown are in metres and decimals thereof.
 - Boundary of Unit 45 is governed by monuments placed pursuant to Plan 181 0190 and by the boundaries of Units 46 to 335 inclusive.
 - Unit 45 includes all that portion not contained within Units 46 to 335.
 - The boundaries of Units 46 through 335 are as described in Sec. 9(1) of the Condominium Property Act or where no walls exist, the vertical plane as defined by distances shown.
 - All unit dimensions and floor areas are measured along unit boundaries.
 - Areas and internal unit dimensions are an approximate indication of unit size as derived from Architectural plans, and confirmed by field measurements.
 - Unit numbers are shown thus: Unit 46
 - The boundaries of a Unit are:
 - 1) Where walls exist shown thus: ———— or ————
 - 2) Where no walls exist the boundary of a unit is governed by the dimensions as shown: ————



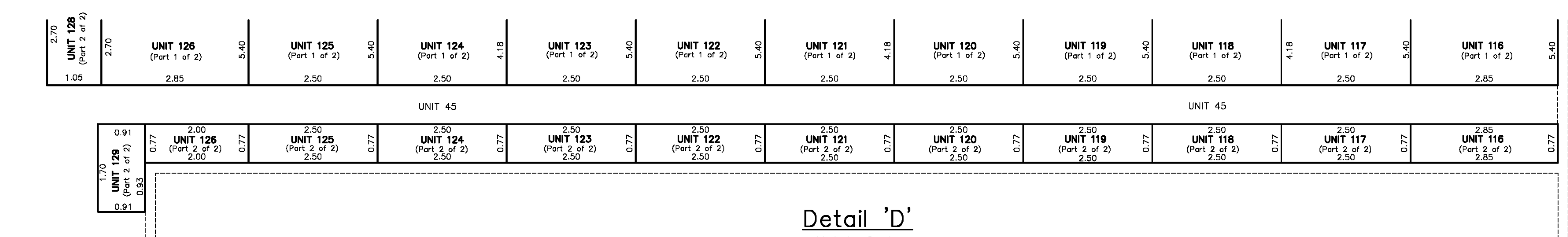
Detail 'A'
Not to Scale



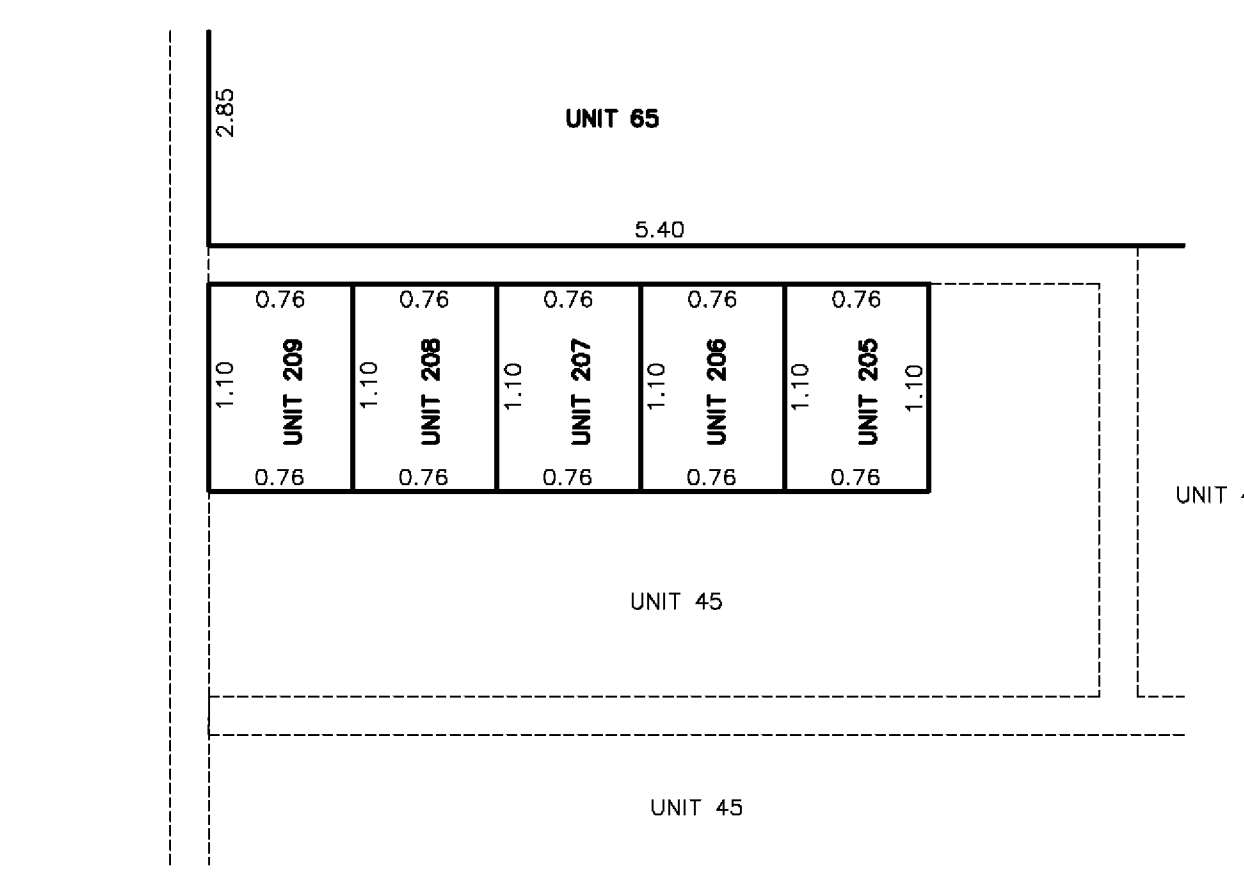
Detail 'B'
Not to Scale



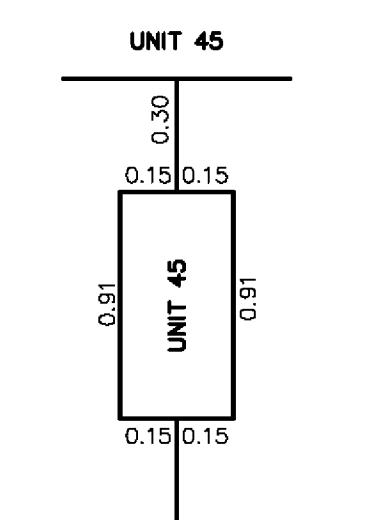
Detail 'C'
Not to Scale



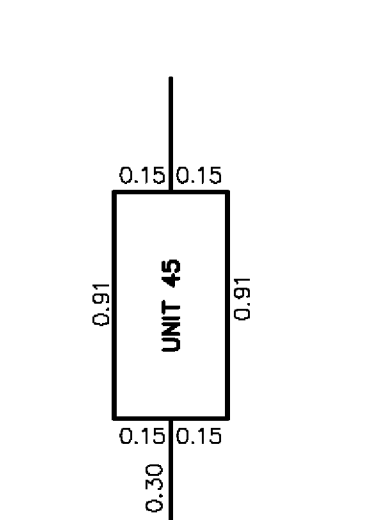
Detail 'D'
Not to Scale



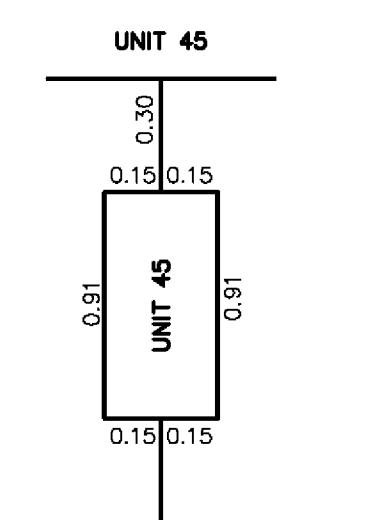
Detail 'F'
SCALE 1:100



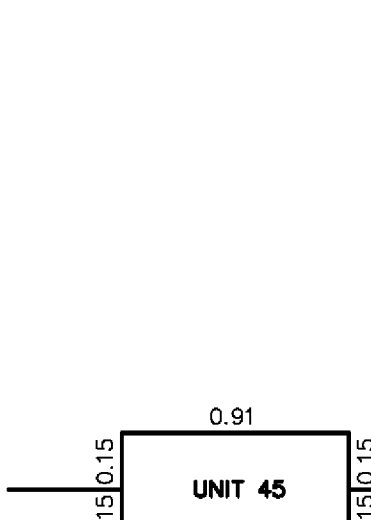
Detail 'G'
SCALE 1:20



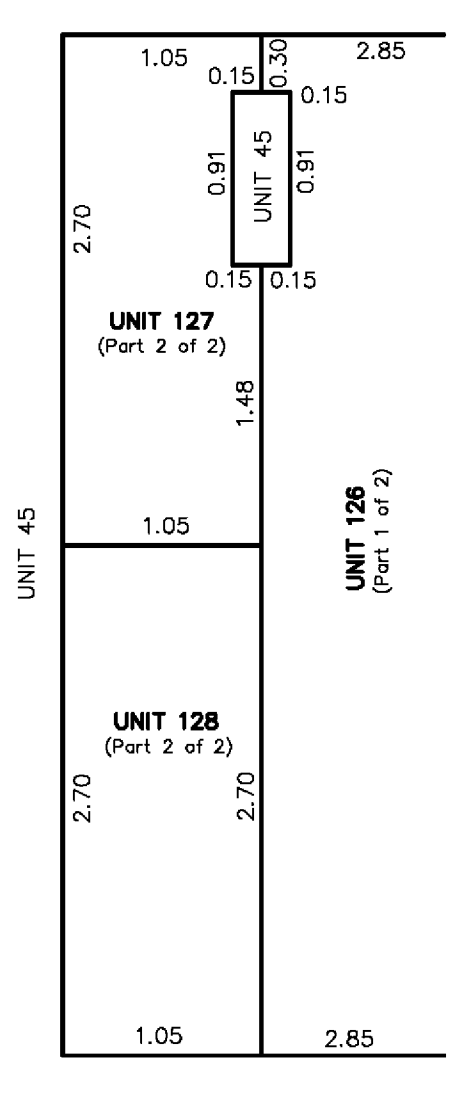
Detail 'H'
SCALE 1:20



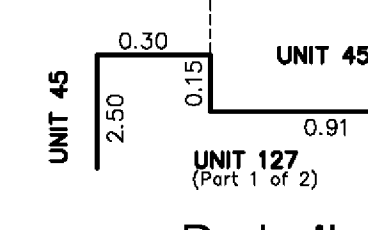
Detail 'I'
SCALE 1:20



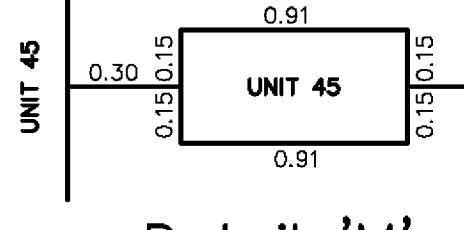
Detail 'J'
SCALE 1:20



Detail 'K'
Not to Scale



Detail 'L'
SCALE 1:20



Detail 'M'
SCALE 1:20



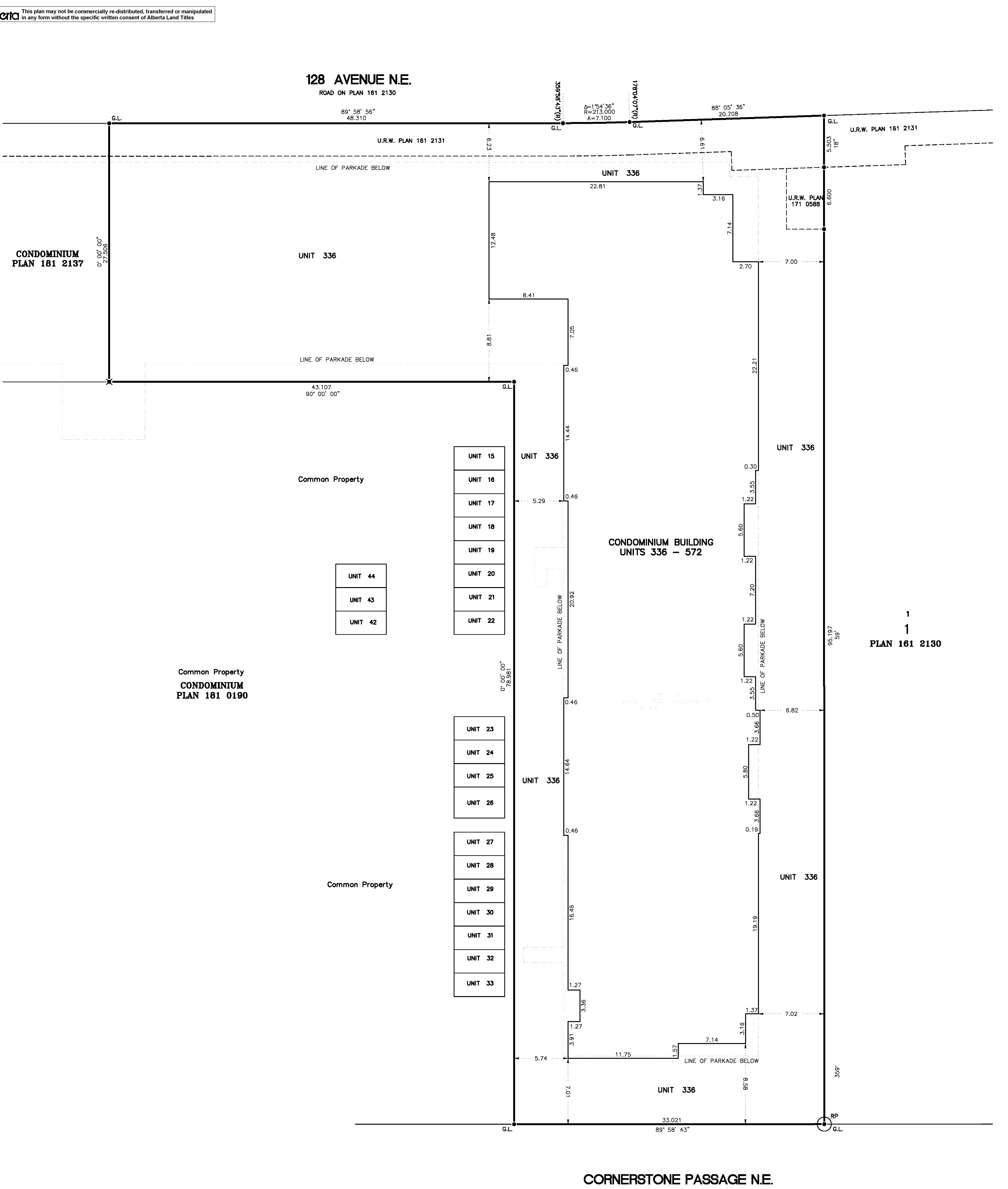
Detail 'E'
SCALE 1:100

SCHEDULE OF UNIT FACTORS AND AREAS	UNIT NO.	UNIT FACTOR	AREA IN SQ.M.
336	1	N/A	
337	1	15.8	
338	1	17.3	
339	1	15.3	
340	1	15.3	
341	1	15.4	
342	1	15.3	
343	1	15.3	
344	1	15.4	
345	1	15.3	
346	1	15.3	
347	1	15.4	
348	1	15.3	
349	1	15.3	
350	1	15.4	
351	1	15.3	
352	1	15.3	
353	1	15.5	
354	1	15.3	
355	1	15.3	
356	1	15.4	
357	1	15.3	
358	1	15.3	
359	1	15.4	
360	1	16.3	
361	1	15.5	
362	1	13.4	
363	1	13.4	
364	1	13.5	
365	1	13.4	
366	1	13.4	
367	1	13.5	
368	1	13.4	
369	1	13.4	
370	1	13.5	
371	1	13.4	
372	1	13.4	
373	1	13.5	
374	1	13.4	
375	1	13.4	
376	1	13.5	
377	1	13.4	
378	1	13.4	
379	1	13.5	
380	1	13.4	
381	1	13.4	
382	1	13.5	
383	1	13.4	
384	1	13.4	
385	1	13.5	
386	1	13.4	
387	1	13.4	
388	1	15.4	
389	1	18.7	
390	1	16.7	
391	1	17.2	
392	1	17.2	
393	1	17.2	
394	1	17.3	
395	1	17.2	
396	1	17.3	
397	1	17.2	
398	1	17.2	
399	1	17.3	
400	1	17.2	
401	1	17.2	
402	1	18.1	
403	1	16.8	
404	1	16.9	
405	1	16.8	
406	1	16.8	
407	1	16.9	
408	1	19.1	
409	1	20.3	
410	1	15.3	
411	1	14.5	
412	1	15.3	
413	1	15.3	
414	1	15.4	
415	1	15.3	
416	1	15.3	
417	1	15.4	
418	1	15.3	
419	1	15.3	
420	1	15.4	
421	1	15.3	
422	1	15.3	
423	1	15.4	
424	1	15.3	
425	1	15.3	
426	1	15.4	
427	1	15.3	
428	1	16.5	
429	1	0.9	
430	1	0.9	
431	1	0.9	
432	1	0.9	
433	1	0.9	
434	1	2.2	
435	1	0.9	
436	1	0.9	
437	1	0.9	
438	1	0.9	
439	1	0.9	
440	1	0.9	
441	1	1.9	
442	1	0.9	
443	1	0.9	
444	1	0.9	
445	1	0.9	
446	1	0.9	
447	1	0.9	
448	1	0.7	
449	1	0.7	
450	1	0.7	
451	1	0.7	
452	1	0.7	
453	1	0.7	
454	1	0.7	
455	1	0.7	
456	1	0.7	
457	1	0.7	
458	1	0.7	
459	1	0.7	

SCHEDULE OF UNIT FACTORS AND AREAS	UNIT NO.	UNIT FACTOR	AREA IN SQ.M.
460	1	1.3	
461	1	2.3	
462	1	1.0	
463	1	1.1	
464	1	0.9	
465	1	0.9	
466	1	0.9	
467	1	0.9	
468	1	0.9	
469	1	0.9	
470	1	0.9	
471	1	0.9	
472	1	1.1	
473	1	1.1	
474	1	1.1	
475	1	1.1	
476	1	1.1	
477	1	1.1	
478	1	1.1	
479	47	62.9	
480	49	66.1	
481	49	66.1	
482	47	63.0	
483	49	66.2	
484	49	66.1	
485	47	62.8	
486	41	56.0	
487	57	76.6	
488	54	73.5	
489	41	56.0	
490	41	56.0	
491	37	50.5	
492	37	50.6	
493	47	62.9	
494	37	50.6	
495	37	50.6	
496	38	50.9	
497	41	55.9	
498	41	56.0	
499	41	56.0	
500	54	73.4	
501	56	73.6	
502	47	63.0	
503	49	66.1	
504	49	66.1	
505	47	62.9	
506	47	62.9	
507	49	66.0	
508	49	66.1	
509	47	62.9	
510	41	56.0	
511	57	76.7	
512	54	73.5	
513	41	55.8	
514	41	56.0	
515	38	50.7	
516	38	50.9	
517	38	50.7	
518	37	50.6	
519	38	50.7	
520	38	50.8	
521	41	55.9	
522	41	56.0	
523	41	56.0	
524	54	73.7	
525	54	73.5	
526	47	62.9	
527	49	66.1	
528	49	65.8	
529	47	62.9	
530	47	63.1	
531	49	65.8	
532	49	65.8	
533	47	62.9	
534	49	65.5	
535	57	77.0	
536	56	73.9	
537	41	55.7	
538	41	56.0	
539	37	50.4	
540	37	50.4	
541	37	50.6	
542	37	50.5	
543	37	50.6	
544	37	50.5	
545	41	55.8	
546	41	56.0	
547	49	65.8	
548	54	73.4	
549	56	73.6	
550	47	62.9	
551	49	66.2	
552	49	66.0	
553	46	62.6	
554	47	63.0	
555	49	66.2	
556	49	65.8	
557	47	63.0	
558	49	65.5	
559	57	76.6	
560	54	73.5	
561	41	55.8	
562	41	56.0	
563	37	50.4	
564	37	50.4	
565	37	50.6	
566	37	50.5	
567	37	50.6	
568	37	50.6	
569	41	55.8	
570	42	56.1	
571	49	65.8	
572	54	73.5	
TOTAL	4373	7173.6	

The Basis for determining Unit Factors is as follows:
Unit Factors for Units 336 to 478 were assigned a nominal value of 1.
Unit Factors for Units 479 to 572 are proportional to their respective areas.

This plan may not be commercially re-distributed, transferred or manipulated in any form without the specific written consent of Alberta Land Titles.



CORNERSTONE PASSAGE N.E.

LAND TITLES OFFICE

PLAN NO. 1911680
ENTERED AND REGISTERED
ON August 19, 2019
INSTRUMENT NO.: 191 166 831
G. M. McGeachie
A.D. REGISTRAR

SHEET 1 OF 4

CALGARY, ALBERTA

PLAN SHOWING SURVEY OF CONDOMINIUM

OF RE-DIVISION OF
UNIT 2 AND 4.373 ONE TEN THOUSANDTH
SHARES IN THE COMMON PROPERTY
BARE LAND CONDOMINIUM PLAN 181 0190
WITHIN THE
N.E.1/4 Sec.26 Twp.25 Rge.29 W.4th M.

BY: JODY E. CLARKE, A.L.S., 2019

SCALE = 1 : 200

STANDARD SYMBOL LEGEND:

THE GEO-REFERENCED POINT IS SHOWN THIS: ○ RP
STATUTORY IRON POST FOUND SHOWN THIS: ●
DRILL HOLES FOUND SHOWN THIS: ×

ABBREVIATIONS THAT MAY APPEAR ON THIS PLAN:

A DENOTES ARC	N DENOTES NORTH
A.L.S. DENOTES ALBERTA LAND SURVEYOR	O.D.R.W. DENOTES OVERLAND DRAINAGE RIGHT-OF-WAY
ASCM DENOTES ALBERTA SURVEY CONTROL MARKER	PL DENOTES PLACED
CS DENOTES COUNTER SIGN	P.U.L. DENOTES PUBLIC UTILITY LOT
C of T DENOTES CERTIFICATE OF TITLE	R DENOTES RADIUS
D.H. DENOTES DRILL HOLE	(R) DENOTES RADIAL BEARING
Δ DENOTES CENTRAL DELTA ANGLE	Re-est. DENOTES RE-ESTABLISHED
E DENOTES EAST	Ref. DENOTES REFERENCE
Fd DENOTES FOUND	Rge DENOTES RANGE
GL DENOTES GROUND LEVEL	RP DENOTES GEO-REFERENCED POINT
GNSS DENOTES GLOBAL NAVIGATION SATELLITE SYSTEM	S DENOTES SOUTH
hd DENOTES HECTARES	Sec DENOTES SECTION
I DENOTES STATUTORY IRON POST	TOP DENOTES TOP CUT OFF
M DENOTES MERIDIAN	Twp DENOTES TOWNSHIP
Md DENOTES MARK	U.L.E.W. DENOTES UTILITY RIGHT-OF-WAY
MR DENOTES MUNICIPAL RESERVE	W DENOTES WEST

NOTES:
-Distances shown are ground in metres and decimals thereof and are between iron posts unless shown otherwise.
-Boundary of unit 336 is governed by monuments placed pursuant to Plan 181 0190 and by the boundaries of Unit 337 to 572 inclusive.
-Unit 336 includes all that portion not contained within Units 337 to 572.
-The boundaries of Units 337 through 572 are as described in Sec. 9(1) of the Condominium Property Act or where no walls exist, the vertical plane as defined by distances shown.
-Area affected by the registration of this plan shown bounded thus: _____ and contains 0.421 ha.
-All building location dimensions are perpendicular to the property lines unless otherwise shown.
-All unit dimensions and floor areas are measured along unit boundaries.
-Areas and internal unit dimensions are an approximate indication of unit size as derived from Architectural plans, and confirmed by field measurements.
-Unit numbers are shown thus: Unit 337
The boundaries of a unit are: _____ or _____
1) Where walls exist shown thus:
2) Where no walls exist the boundary of a unit is governed by the dimensions as shown _____
-There are no projections from any other property infringing on the external boundaries of the parcel.
-Bearings are grid, based on NAD83 (original), 3TM projection, reference Meridian 114° West Longitude and are derived from Plan 181 0190.
-Combined scale factor : 0.999732
-The Geo-Referenced point is a Found Statutory Iron Post with grid coordinates of N 5669787.642 E 3864.283

NOTE:
For any endorsement, registration memorandum, notification or other entry that is to be made on this plan, please see the condominium additional sheet (ca) which has been added to 181 0190 pursuant to the condominium property registration.

POST TENSIONED CABLES:
This plan is accompanied by a certificate regarding post tensioned cables and signed by Douglas G. Gabriel, P.Eng.
Stating there are no post tensioned cables located anywhere on or within the building or the property on which the building is located.

SURVEYOR: JODY E. CLARKE, A.L.S. DATES OF SURVEY: Surveyed between the dates of October 13th, 2016 and August 8th, 2019 In accordance with the provisions of the Surveys Act.	APPROVING AUTHORITY: CITY OF CALGARY FILE No. CA2019-0089
	REGISTERED OWNERS: LEGENDS OF CORNERSTONE INC. C. of T. : 181 019 777 41
VISTA GEOMATICS LTD. Boy 1, 2135 - 32nd Ave. N.E. Calgary, Alberta T2E 6Z3 Phone (403) 270-1048 E-mail: admin@vistageomatics.com DN	

JOB NO.: 16105170

CALGARY, ALBERTA PLAN SHOWING SURVEY OF CONDOMINIUM

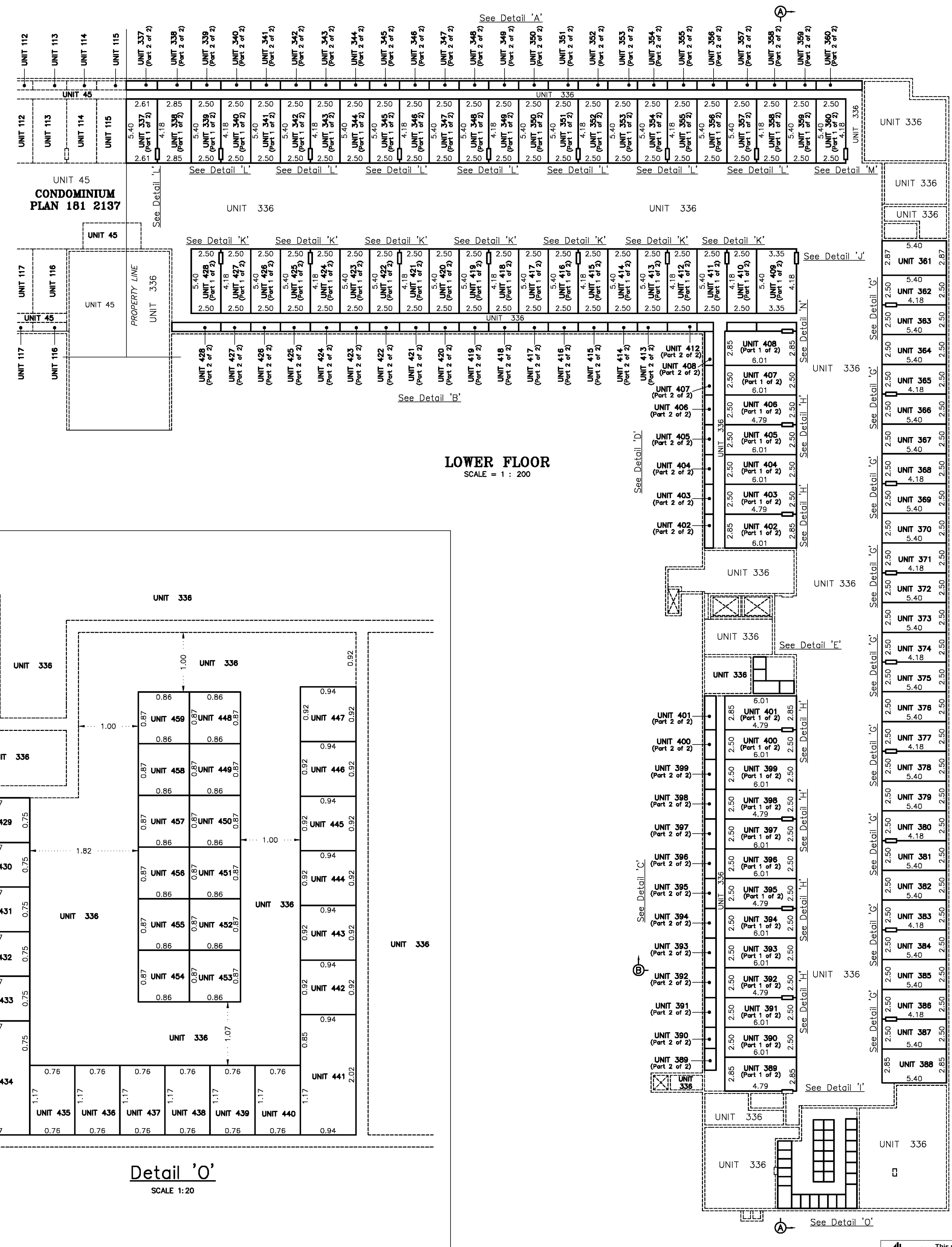
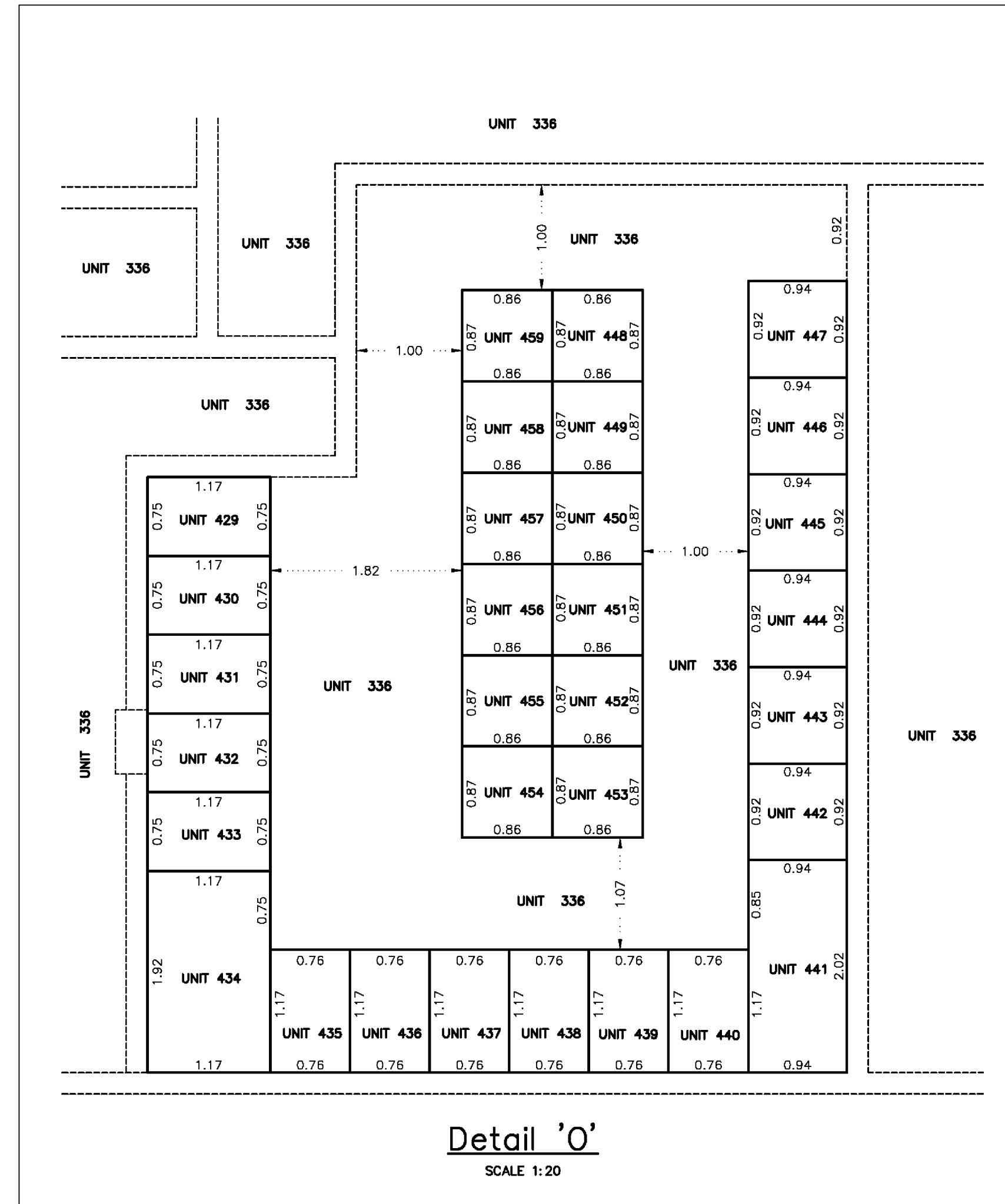
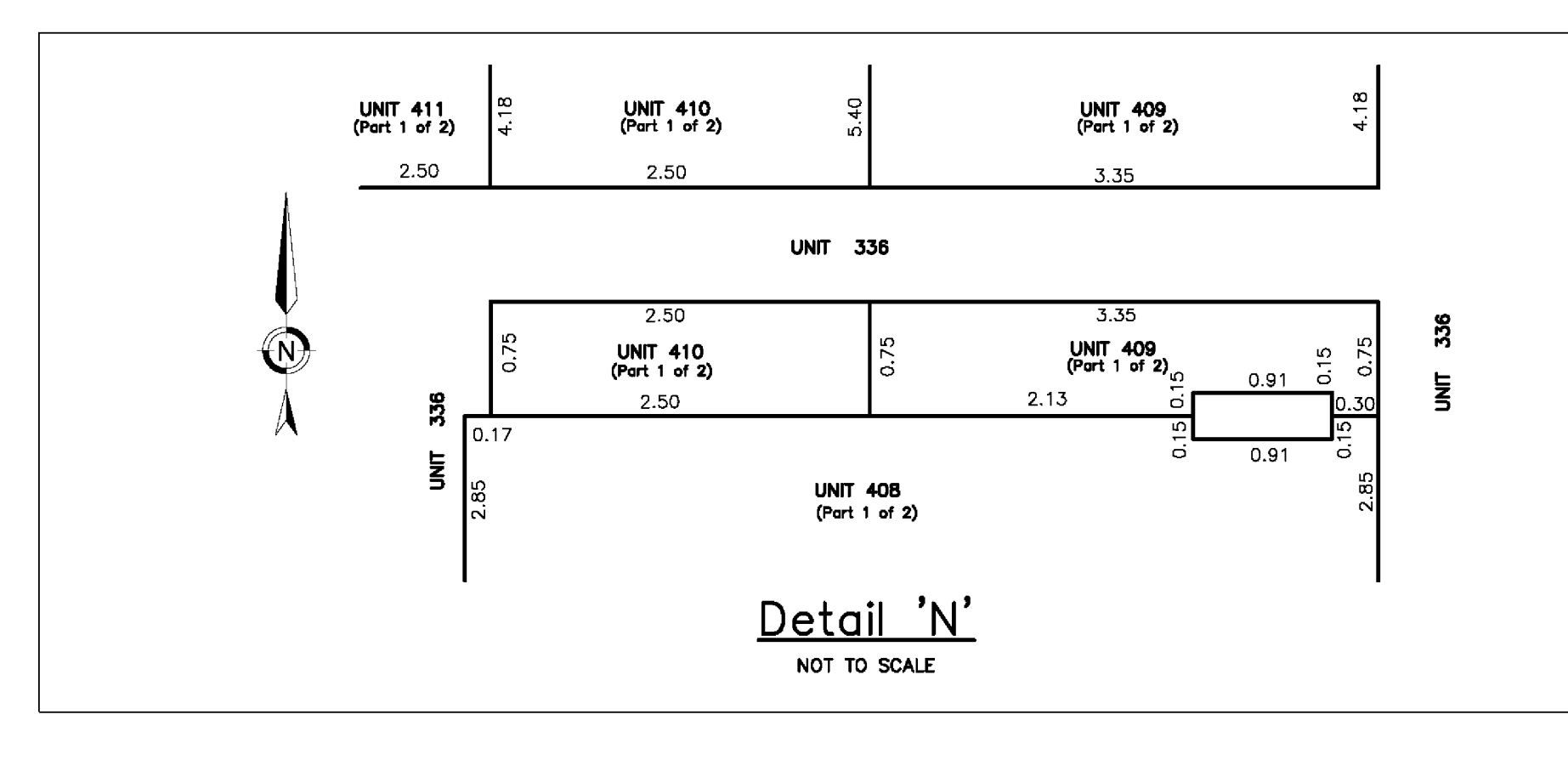
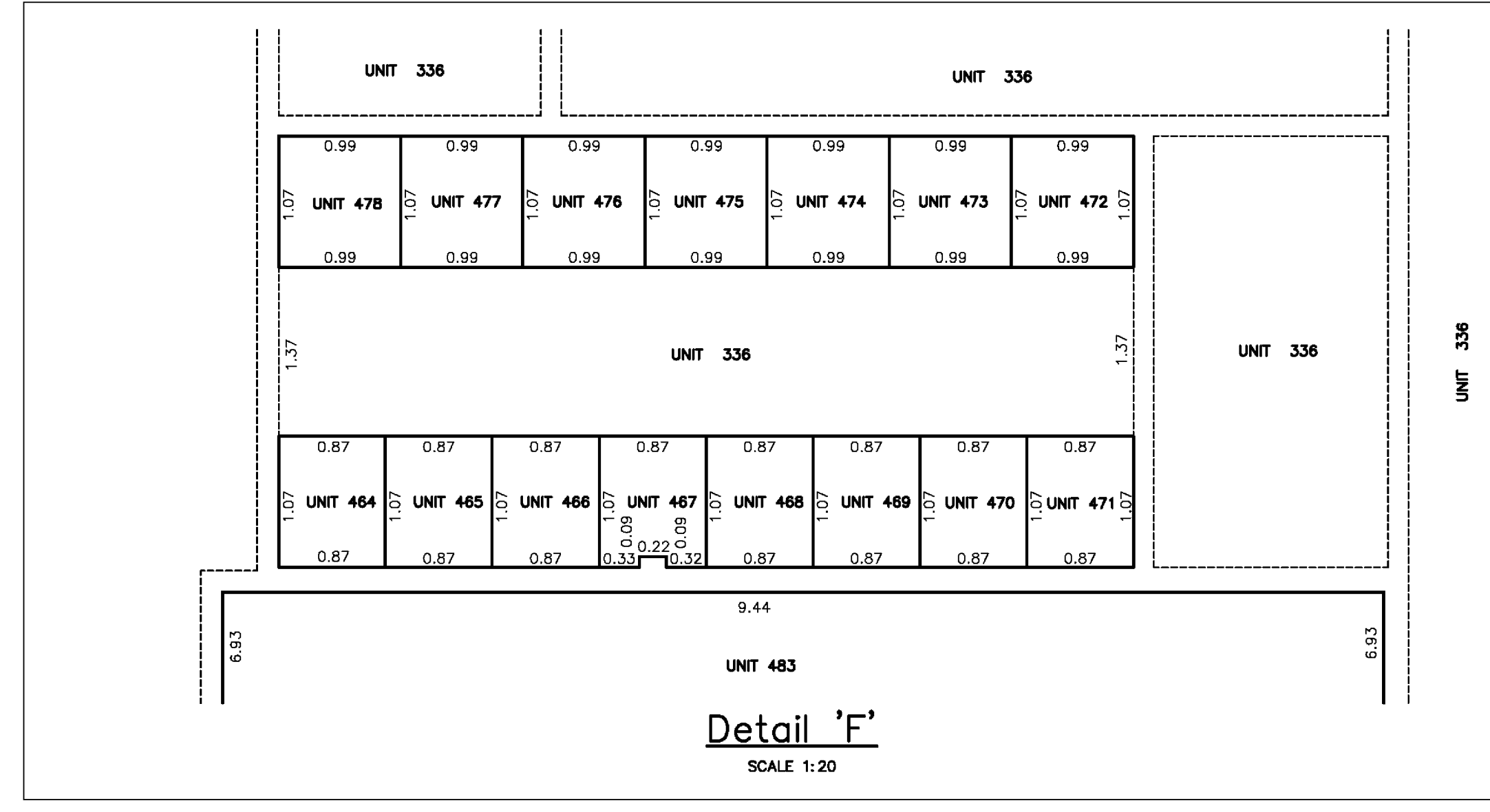
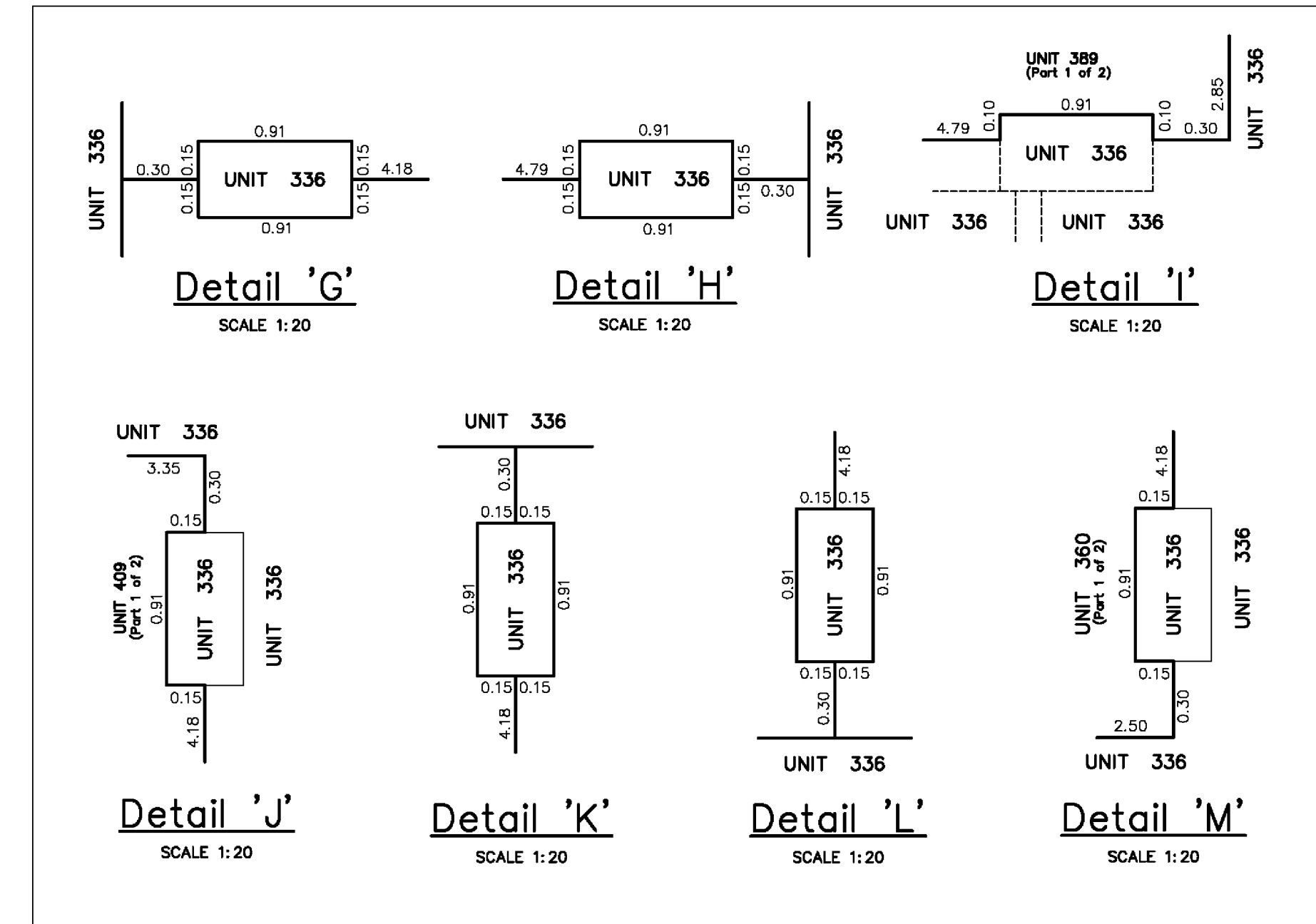
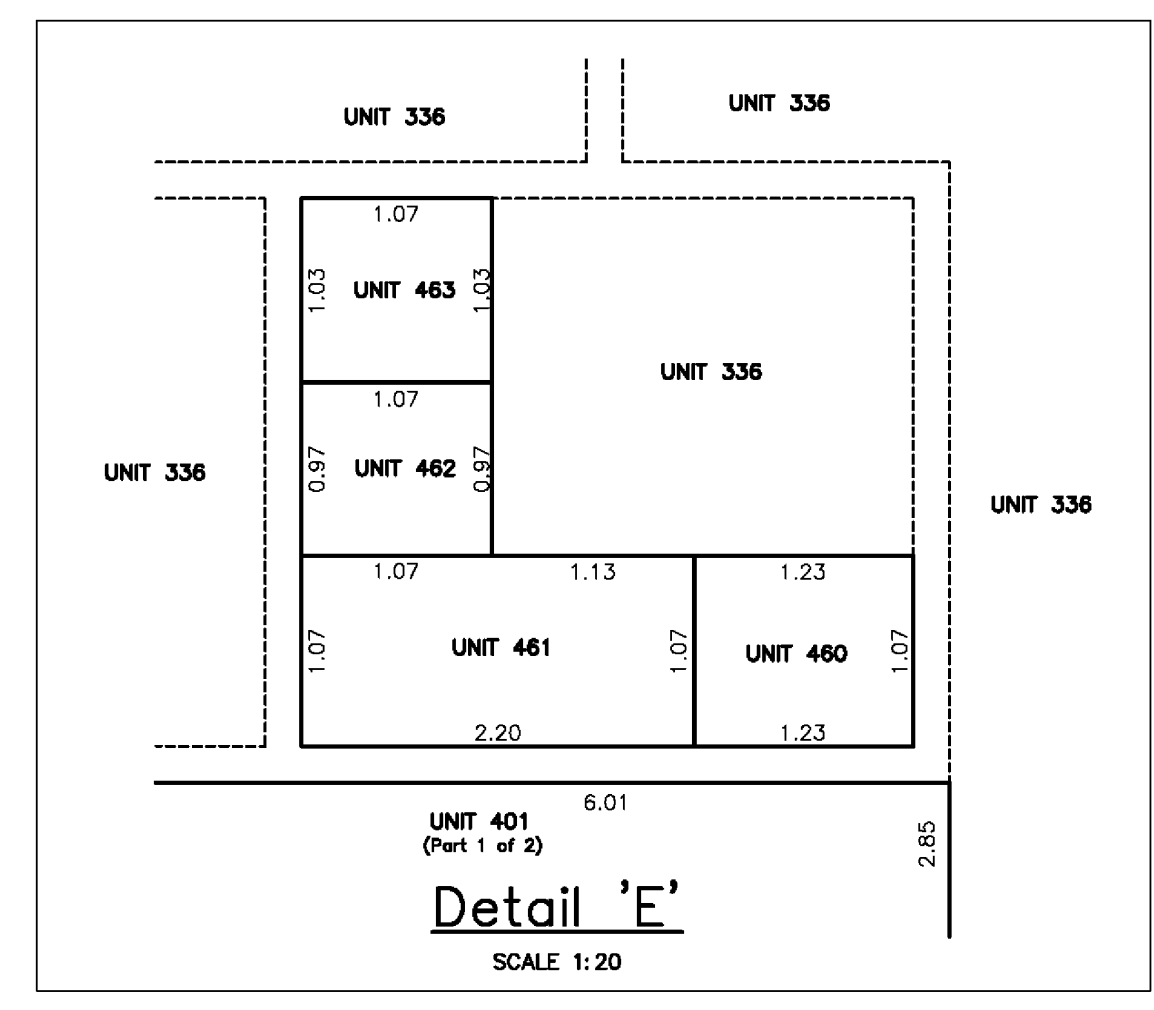
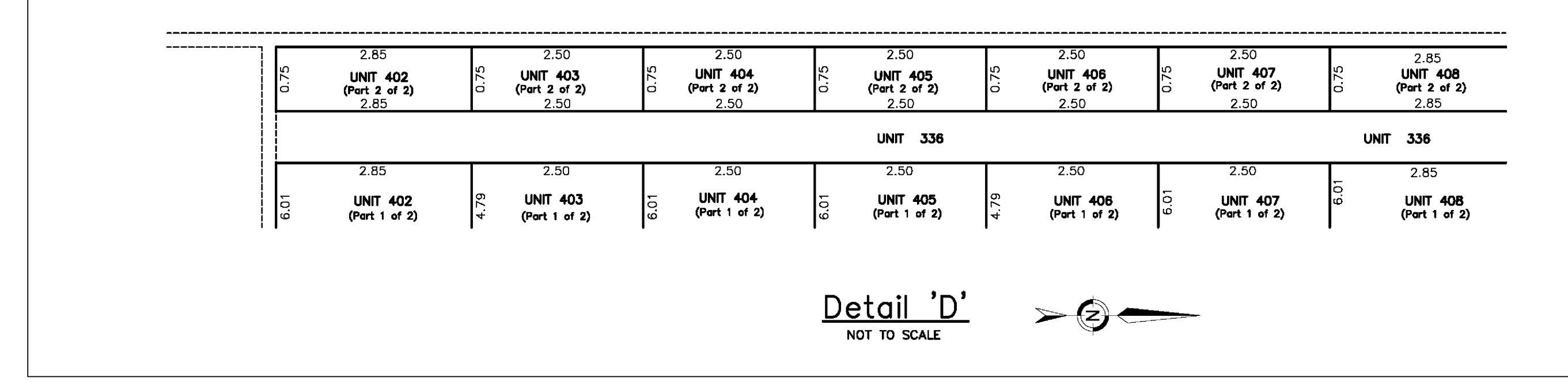
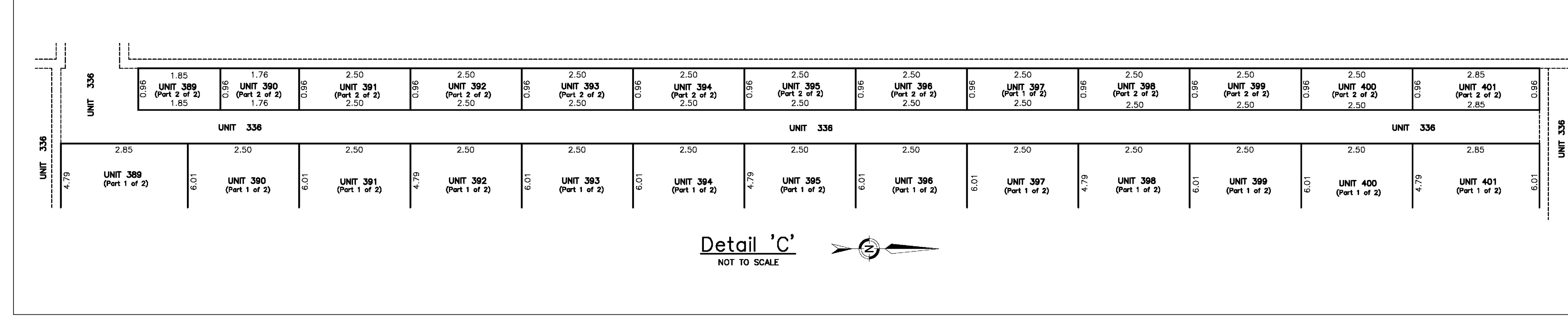
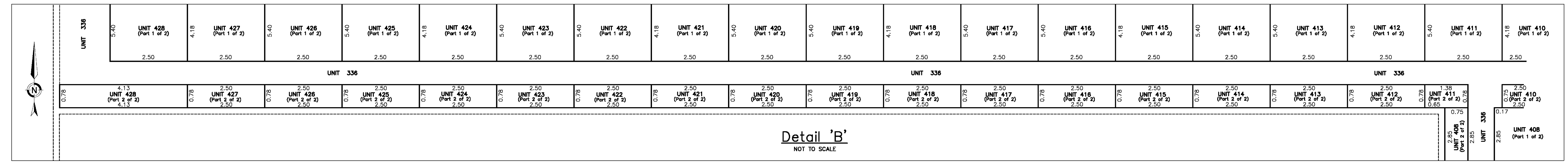
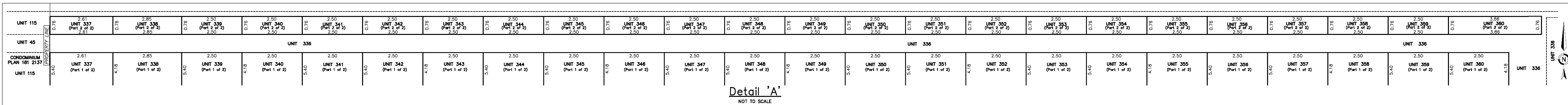
OF RE-DIVISION OF
UNIT 2 AND 4373 ONE TEN THOUSANDTH
SHARES IN THE COMMON PROPERTY
BARE LAND CONDOMINIUM PLAN 181 0190
WITHIN THE
N.E.1/4 Sec.26 Twp.25 Rge.29 W.4th M.

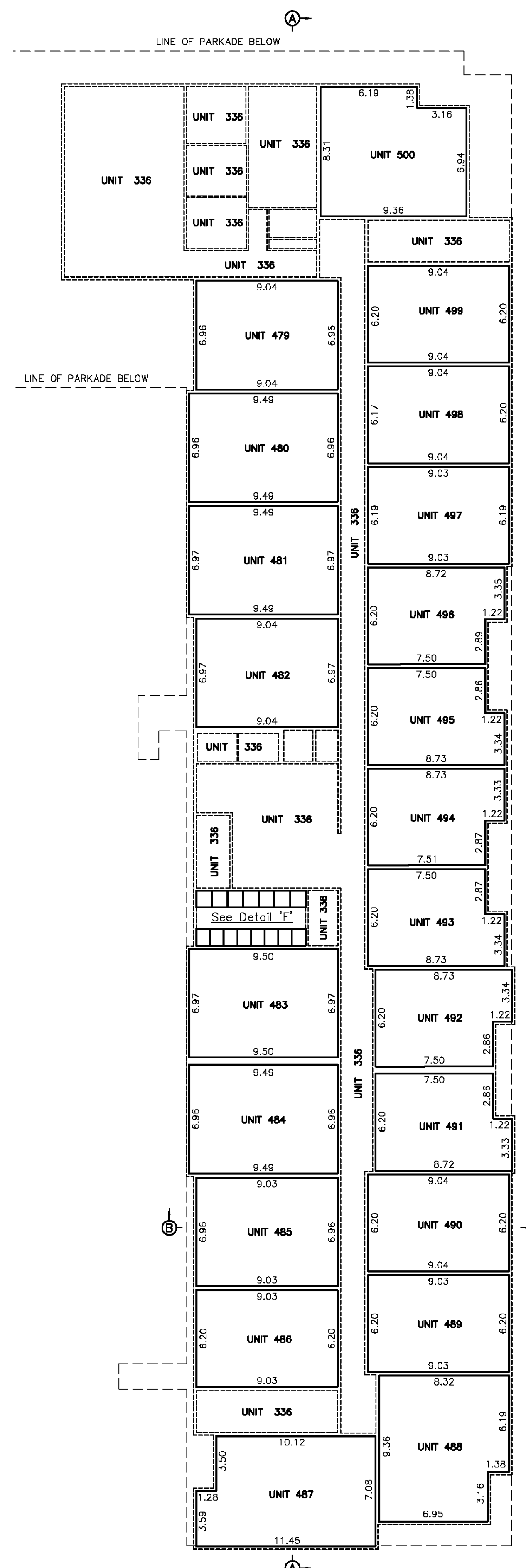
BY: JODY E. CLARKE, A.L.S., 2019

SCALE = 1 : 200

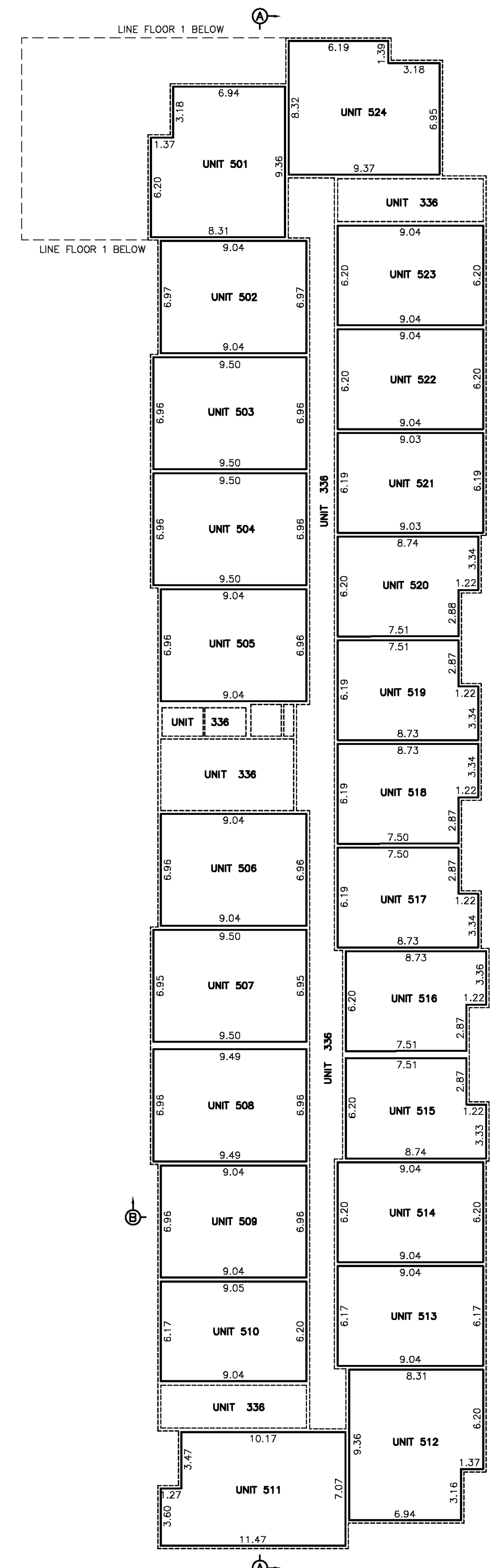


- NOTES:**
- Distances shown are in metres and decimals thereof.
 - Boundary of Unit 336 is governed by monuments placed pursuant to Plan 181 0190 and by the boundaries of Units 337 to 572 inclusive.
 - Unit 336 includes all that portion not contained within Units 337 to 572.
 - The boundaries of Units 337 through 572 are as described in Sec. 9(1) of the Condominium Property Act or where no walls exist, the vertical plane as defined by distances shown.
 - All unit dimensions and floor areas are measured along unit boundaries.
 - Areas and internal unit dimensions are an approximate indication of unit size as derived from Architectural plans, and confirmed by field measurements.
 - Unit numbers are shown thus: Unit 337
 - The boundaries of a Unit are:
 - 1) Where walls exist shown thus: _____
 - 2) Where no walls exist the boundary of a unit is governed by the dimensions as shown: _____

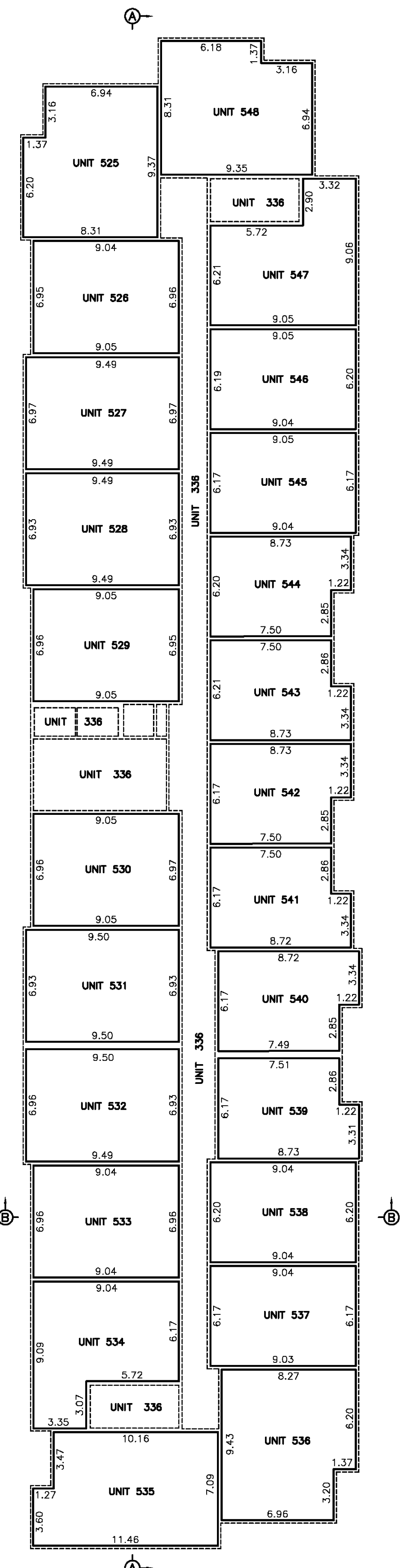




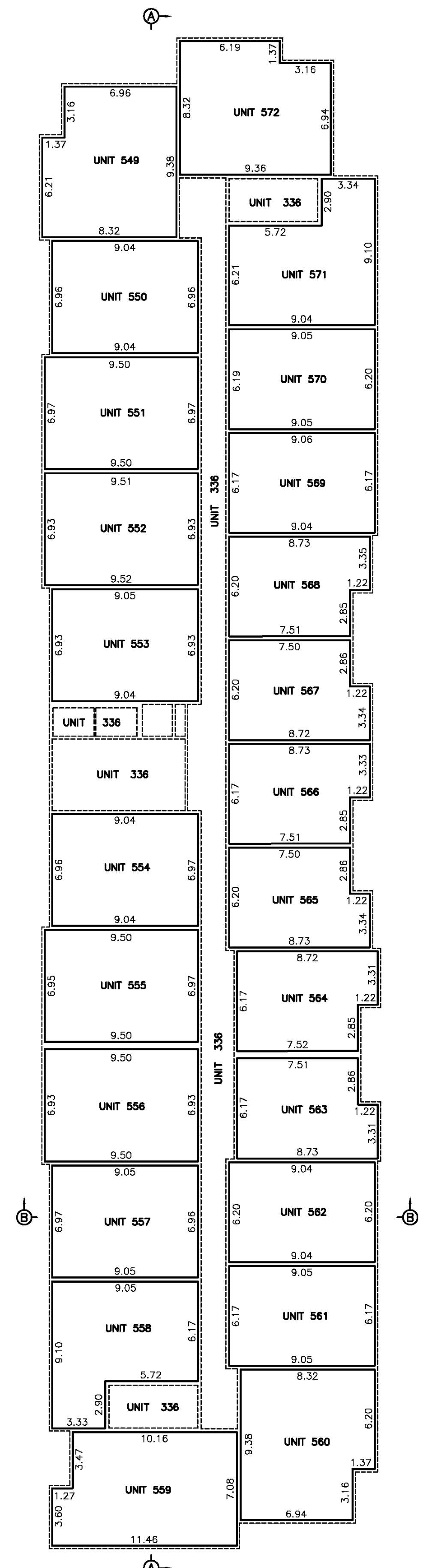
FLOOR 1
SCALE = 1 : 200



FLOOR 2
SCALE = 1 : 200



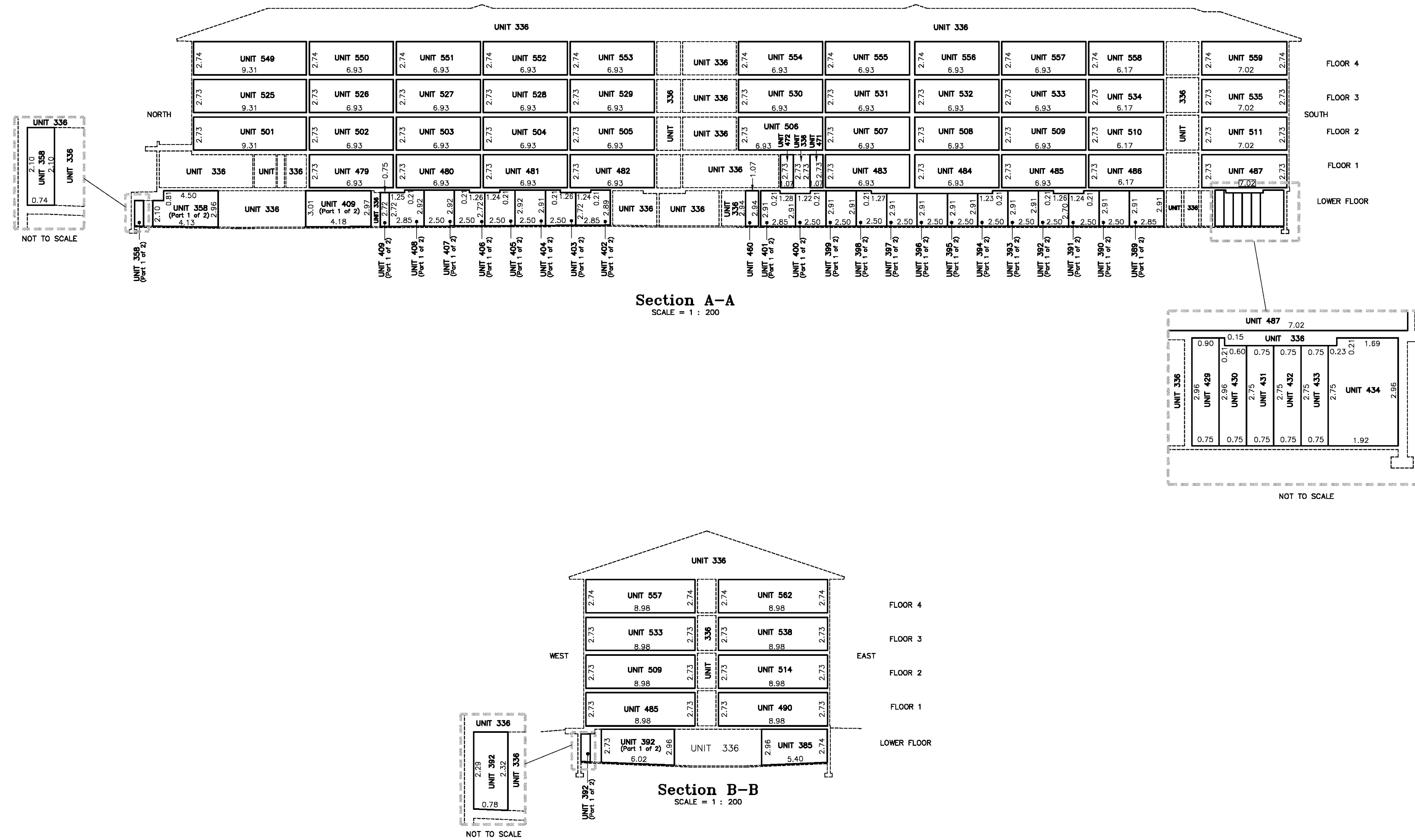
FLOOR 3
SCALE = 1 : 200



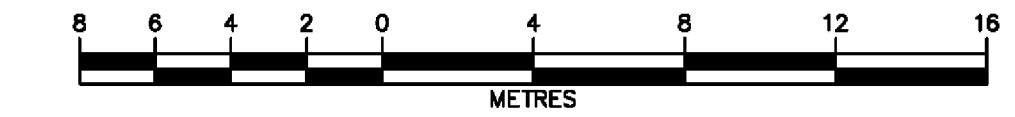
FLOOR 4
SCALE = 1 : 200

CALGARY, ALBERTA
 PLAN SHOWING SURVEY OF
CONDOMINIUM
 OF RE-DIVISION OF
 UNIT 2 AND 4373 ONE TEN THOUSANDTH
 SHARES IN THE COMMON PROPERTY
 BARE LAND CONDOMINIUM PLAN 181 0190
 WITHIN THE
 N.E.1/4 Sec.26 Twp.25 Rge.29 W.4th M.
 BY: JODY E. CLARKE, A.L.S., 2019
 SCALE = 1 : 200

NOTES:
 -Distances shown are in metres and decimals thereof.
 -Boundary of Unit 336 is governed by monuments placed pursuant to Plan 181 0190 and by the boundaries of Units 337 to 572 inclusive.
 -Unit 336 includes all that portion not contained within Units 337 to 572.
 -The boundaries of Units 337 through 572 are as described in Sec. 9(1) of the Condominium Property Act or where no walls exist, the vertical plane as defined by distances shown.
 -All unit dimensions and floor areas are measured along unit boundaries.
 -Areas and internal unit dimensions are an approximate indication of unit size as derived from Architectural plans, and confirmed by field measurements.
 -Unit numbers are shown thus Unit 337
 The boundaries of a Unit are:
 1) Where walls exist shown thus: ———— or ————
 2) Where no walls exist the boundary of a unit is governed by the dimensions as shown: ————



CALGARY, ALBERTA
 PLAN SHOWING SURVEY OF
CONDOMINIUM
 OF RE-DIVISION OF
 UNIT 2 AND 4373 ONE TEN THOUSANDTH
 SHARES IN THE COMMON PROPERTY
 BARE LAND CONDOMINIUM PLAN 181 0190
 WITHIN THE
 N.E.1/4 Sec.26 Twp.25 Rge.29 W.4th M.
 BY: JODY E. CLARKE, A.L.S., 2019
 SCALE = 1 : 200



- NOTES:**
- Distances shown are in metres and decimils thereof.
 - Boundary of Unit 336 is governed by monuments placed pursuant to Plan 181 0190 and by the boundaries of Units 337 to 572 inclusive.
 - Unit 336 includes all that portion not contained within Units 337 to 572.
 - The boundaries of Units 337 through 572 are as described in Sec. 9(1) of the Condominium Property Act or where no walls exist, the vertical plane as defined by distances shown.
 - All unit dimensions and floor areas are measured along unit boundaries.
 - Areas and internal unit dimensions are an approximate indication of unit size as derived from Architectural plans, and confirmed by field measurements.
 - Unit numbers are shown thus Unit 337
- The boundaries of a Unit are:
 1) Where walls exist shown thus: ===== or =====
 2) Where no walls exist the boundary of a unit is governed by the dimensions as shown: _____